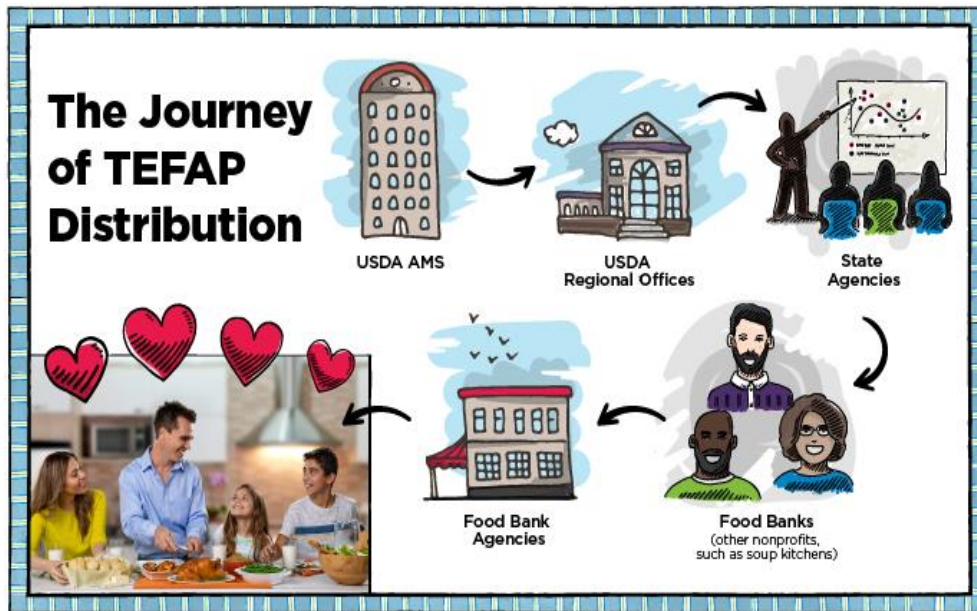


Dairy MAX TEFAP Update

TEFAP Entitlement Dollars Can Now Be Spent on Fresh Fluid Milk

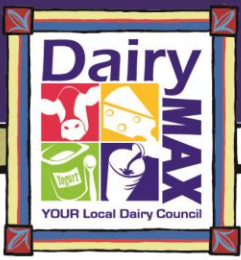


TEFAP is the largest source of federal support for emergency feeding organizations.

What Changed?

- In January 2021, the USDA expanded the [TEFAP Catalog](#) to include fluid half and full gallons of skim milk and half and full gallons of 1% milk to begin delivery July 2021.
- Before 2021, fresh fluid milk was only available as a BONUS commodity through various TEFAP programs.
- **This means food banks can now use their entitlement dollars (\$400MM annually) to shop for fluid milk year-round** which is on top of fluid milk they can receive through TEFAP Bonus commodity programs.





TEFAP Commodity Types & Why it Matters:

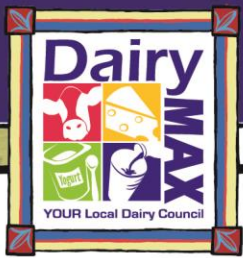
There are multiple funding legs of TEFAP. The type of commodity is not the same for each. Only one funding leg includes entitlement commodities.

*Source <https://fas.org/sgp/crs/misc/R45408.pdf>

*Source [https://www.fns.usda.gov/tefap/additional-information-fy-2020-funding-sources#:~:text=TEFAP%20Food%20Entitlement%20and%20Administrative,\(PL%20116%2D94\)](https://www.fns.usda.gov/tefap/additional-information-fy-2020-funding-sources#:~:text=TEFAP%20Food%20Entitlement%20and%20Administrative,(PL%20116%2D94))

- **Entitlement commodities:** Mandatory funding allotted annually. Food Banks purchase commodities off a catalog/ shopping list.
 - Entitlement commodities are appropriated entitlements, meaning that the authorizing law sets the level of spending, but an annual appropriation is needed to provide funding.
 - Funding for bonus commodities is not included in the TEFAP appropriation and is instead provided by separate USDA budget authority. These funds are used by USDA for bonus commodity purchases for the program throughout the year.
 - TEFAP's administrative funds are discretionary spending, requiring an annual appropriation.

- **BONUS commodities:** Distributed at the USDA's discretion through the year, typically distributed by quarter. Budget is separate from TEFAP entitlement \$s.
 - Bonus commodities are purchased at the USDA's discretion throughout the year using separate (non TEFAP) USDA budget authority for that purpose. USDA's purchases of bonus commodities are based on agricultural surpluses or other economic problems, as raised by farm and industry organizations or USDA's own commodity experts.
 - The amount and type of bonus commodities that USDA purchases for TEFAP fluctuates from year to year and depends largely on agricultural market conditions.



[2020 Breakdown of TEFAP Funding Programs and the Lbs. of Dairy Allocated to Food Banks Nationally]

TEFAP						
Dairy Lbs by TEFAP Funding Leg/ Program						
	Total Dairy Lbs	Fluid Milk Lbs	UHT Milk / Instant Milk Lbs	Cheese Lbs	Butter Lbs	Yogurt Lbs
TEFAP Entitlement (Shopping List)	7,942,215		7,440,183	502,032		
TEFAP CARES (Classified as BONUS)	16,641,537		8,865,489	7,776,048		
TEFAP Trade Mitigation (Classified as BONUS)	24,240,672		4,972,032	12,045,600	7,223,040	
TEFAP Section 32 (Classified as BONUS)	162,002,958	121,317,210	6,859,008	23,238,420	10,588,320	
TEFAP Families First Coronavirus Response Act (BONUS)	8,901,660		2,051,100	4,634,400	2,216,160	

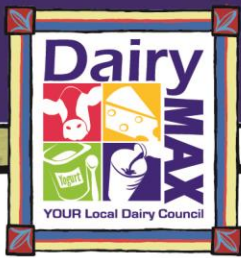
*Source <https://www.fns.usda.gov/usda-foods/delivery-order-status-reports>

- Last year (FY 2020), less than 2% of the total entitlement budget of \$400MM was spent on dairy. Dairy has a big opportunity to increase now that fresh fluid milk is on the catalog.

[TEFAP Budget Justifications 2021-2020]

Fiscal Year	Appropriations		Purchases
	Administrative Funds	Entitlement Commodities	Bonus Commodities
2012	48.0	260.3	304.2
2013 ^b	49.4	265.8	228.5
2014	49.4	268.8	298.8
2015	49.4	327.0	302.9
2016	54.4	318.0	305.5
2017	59.4	316.0	268.6
2018	64.4	289.5	308.9
2019 ^c	109.6	294.5	Not avail.
2020	79.6	322.3	Not avail.

*Source FY008-FY2019 data from congressional budget justifications for FY2010-FY2020; FY2020 appropriations from the Further Consolidated Appropriations Act, 2020 (P.L. 116-94) and accompanying explanatory statement. <https://fas.org/sgp/crs/misc/R45408.pdf>



2020 USDA Foods Available List for TEFAP – Dairy products are shelf stable milk and cheese only

USDA Foods Available List for The Emergency Food Assistance Program (TEFAP)			2020		
USDA Foods Description	WBCSM ID	PACK SIZE	USDA Foods Description	WBCSM ID	PACK SIZE SUBGROUP
PROTEIN FOODS			GRAINS		
Alaska Pollock, Fillet, Frozen	110345	20/2 lb bag	Bakery Mix, Lowfat	110902	20/20 oz bag
Alaska Pollock, Whole Grain Breaded Fish Sticks, Frozen	110850	20/2 lb bag	Cereal, Corn Flakes	100449	12/18 oz package
Beef, Canned/Pouch	100127	24/24 oz package	Cereal, Corn/Rice Biscuits	110265	14/12 oz package
Beef, Fine Ground, 85% Lean/15% Fat, Frozen	100159	40/1 lb package	Cereal, Corn Squares	110740	14/12 oz package
Beef, Fine Ground, 85% Lean/15% Fat, LFTB OPT, Frozen	110260	40/1 lb package	Cereal, Oat Circles	100929	12/14 oz package WG
Beef Stew, Canned/Pouch	100526	24/24 oz package	Cereal, Rice Crisp	100457	16/12 oz package
Catfish, Fillets, Frozen	110390	20/2 lb bag	Cereal, Wheat Bran Flakes	111022	12/16 oz box WG
Chicken, Pouch	110477	36/10 oz pouch	Cereal, Wheat Farina, Enriched	110880	10/18 oz package
Chicken, Split Breast, Frozen	110154	6/5 lb bag	Cereal, Wheat, Shredded	110374	10/16.4 oz package WG
Chicken, Whole, Frozen	100880	10-12 bags/case	Crackers, Unsalted	100403	12/16 oz box
Eggs, Fresh	100936	15/1 dozen carton	Flour, All Purpose, Enriched, Bleached	100400	8/5 lb bag
Egg Mix, Dried	100044	48/6 oz bag/pouch	Flour, White Whole Wheat	110857	8/5 lb bag WG
Peanut Butter, Smooth	111081	12/16 oz jar	Grits, Corn, White	111082	12/2 lb bag
Peanut Butter, Smooth (K)	111170	12/16 oz jar	Grits, Corn, Yellow	111072	12/2 lb bag
Peanut Butter, Smooth, Individual Portion	110854	120/1.1 oz unit	Oats, Rolled, Quick Cooking	111074	12/18 oz package WG
Peanuts, Roasted, Unsalted	100391	12/16 oz package	Pasta, Egg Noodles	100433	12/1 lb bag
Pork, Canned/Pouch	100139	24/24 oz package	Pasta, Macaroni, Enriched	110511	20/1 lb box
Pork, Ham, Frozen	100182	12/3 lb package	Pasta, Macaroni, Whole Grain	101023	24/1 lb box WG
Pork, Chops, Boneless, Frozen	110380	40/1 lb package	Pasta, Macaroni and Cheese	110960	24/7.25 oz package
Salmon, Pink, Canned	110563	24/14.75 oz can	Pasta, Rotini, Whole Grain	110777	12/1 lb box WG
Salmon, Pink, Canned (K)	110580	24/14.75 oz can	Pasta, Spaghetti, Enriched	110450	20/1 lb box
Tuna, Chunk Light, Canned (K)	100194	24/12 oz can	Pasta, Spaghetti, Whole Grain	101035	12/2 lb box WG
DAIRY			Rice, Brown, Long-Grain, Parboiled	100500	24/2 lb bag WG
Cheese, American, Reduced Fat, Loaves, Refrigerated	100035	12/2 lb package	Rice, Brown, Long-Grain, Parboiled	100501	30/2 lb bag WG
Cheese, Cheddar, Yellow, Shredded, Refrigerated	110843	6/2 lb package	Rice, Medium Grain	100487	24/2 lb bag
Milk, 1%, Shelf-Stable UHT	100050	12/32 oz carton	Rice, Medium Grain	100488	30/2 lb bag
Milk, 1%, Individual Portion, Shelf-Stable UHT	100875	27/8 oz box	Rice, Long Grain	100491	24/2 lb bag
OILS			Rice, Long Grain	100492	30/2 lb bag
Oil, Vegetable	100441	9/48 oz bottle	Tortillas, Whole Grain, Frozen	110741	24/1 lb bag WG
OTHER			KEY:		
Soup, Cream of Chicken, Condensed, Reduced Sodium	111210	24/10.5 oz can	WG - Whole Grain		
Soup, Cream of Mushroom, Condensed, Reduced Sodium	110971	12/10.5 oz can	K- Kosher Certification Required		
			UHT- Ultra-High Temperature Pasteurization		
			LFTB OPT - Lean Finely Textured Beef Optional		

2021 USDA Foods Available List for TEFAP – NEW FRESH FLUID MILK ADDED

USDA Foods Available List for The Emergency Food Assistance Program (TEFAP)			2021		
USDA Foods Description	WBCSM ID	PACK SIZE	USDA Foods Description	WBCSM ID	PACK SIZE SUBGROUP
PROTEIN FOODS			GRAINS		
Alaska Pollock, Fillet, Frozen	110345	20/2 lb bag	Bakery Mix, Lowfat	110902	20/20 oz bag
Alaska Pollock, Whole Grain Breaded Fish Sticks, Frozen	110850	20/2 lb bag	Cereal, Corn Flakes	100449	12/18 oz package
Beef, Canned/Pouch	100127	24/24 oz package	Cereal, Corn/Rice Biscuits	110265	14/12 oz package
Beef, Fine Ground, 85% Lean/15% Fat, Frozen	100159	40/1 lb package	Cereal, Corn Squares	110740	14/12 oz package
Beef, Fine Ground, 85% Lean/15% Fat, LFTB OPT, Frozen	110260	40/1 lb package	Cereal, Oat Circles	100929	12/14 oz package WG
Beef Stew, Canned/Pouch	100526	24/24 oz package	Cereal, Rice Crisp	100457	16/12 oz package
Catfish, Fillets, Frozen	110390	20/2 lb bag	Cereal, Wheat Bran Flakes	111022	12/16 oz box WG
Chicken, Pouch	110477	36/10 oz pouch	Cereal, Wheat Farina, Enriched	110880	10/18 oz package
Chicken, Split Breast, Frozen	110154	6/5 lb bag	Cereal, Wheat, Shredded	110374	10/16.4 oz package WG
Chicken, Whole, Frozen	100880	10-12 bags/case	Crackers, Unsalted	100403	12/16 oz box
Eggs, Fresh	100936	15/1 dozen carton	Flour, All Purpose, Enriched, Bleached	100400	8/5 lb bag
Egg Mix, Dried	100044	48/6 oz bag/pouch	Flour, White Whole Wheat	110857	8/5 lb bag WG
Peanut Butter, Smooth	111081	12/16 oz jar	Grits, Corn, White	111082	12/2 lb bag
Peanut Butter, Smooth (K)	111170	12/16 oz jar	Grits, Corn, Yellow	111072	12/2 lb bag
Peanut Butter, Smooth, Individual Portion	110854	120/1.1 oz unit	Oats, Rolled, Quick Cooking	111074	12/18 oz package WG
Peanuts, Roasted, Unsalted	100391	12/16 oz package	Pasta, Egg Noodles	100433	12/1 lb bag
Pork, Canned/Pouch	100139	24/24 oz package	Pasta, Macaroni, Enriched	110511	20/1 lb box
Pork, Ham, Frozen	100182	12/3 lb package	Pasta, Macaroni, Whole Grain	101023	24/1 lb box WG
Pork, Chops, Boneless, Frozen	110380	40/1 lb package	Pasta, Macaroni and Cheese	110960	24/7.25 oz package
Salmon, Pink, Canned	110563	24/14.75 oz can	Pasta, Rotini, Whole Grain	110777	12/1 lb box WG
Salmon, Pink, Canned (K)	110580	24/14.75 oz can	Pasta, Spaghetti, Enriched	110450	20/1 lb box
Tuna, Chunk Light, Canned (K)	100194	24/12 oz can	Pasta, Spaghetti, Whole Grain	101035	12/2 lb box WG
DAIRY			Rice, Brown, Long-Grain, Parboiled	100500	24/2 lb bag WG
Cheese, American, Reduced Fat, Loaves, Refrigerated	100035	12/2 lb package	Rice, Brown, Long-Grain, Parboiled	100501	30/2 lb bag WG
Cheese, Cheddar, Yellow, Shredded, Refrigerated	110843	6/2 lb package	Rice, Medium Grain	100487	24/2 lb bag
Milk, 1%, Shelf-Stable UHT	100050	12/32 oz carton	Rice, Medium Grain	100488	30/2 lb bag
Milk, 1%, Individual Portion, Shelf-Stable UHT	100875	27/8 oz box	Rice, Long Grain	100491	24/2 lb bag
Milk, 1%, Fresh	111200	128 oz (gallon)	Rice, Long Grain	100492	30/2 lb bag
Milk, 1%, Fresh	111173	64 oz (half gallon)	Tortillas, Whole Grain, Frozen	110741	24/1 lb bag WG
Milk, Skim, Fresh	111405	128 oz (gallon)	OILS		
Milk, Skim, Fresh	111175	64 oz (half gallon)	Oil, Vegetable	100441	9/48 oz bottle
OTHER			KEY:		
Soup, Cream of Chicken, Condensed, Reduced Sodium	111210	24/10.5 oz can	WG - Whole Grain		
Soup, Cream of Mushroom, Condensed, Reduced Sodium	110971	12/10.5 oz can	K- Kosher Certification Required		